



**Electrolux**  
PROFESSIONAL

**High Productivity Cooking**  
**Touchline tilting kettle, gas (153540**  
**BTU), 80 gal (300 lt) with 2" TDO valve**

ITEM # \_\_\_\_\_  
MODEL # \_\_\_\_\_  
NAME # \_\_\_\_\_  
SIS # \_\_\_\_\_  
AIA # \_\_\_\_\_



**587042 (PBOT30GDWF)**

Touchline Tilting Kettle, gas,  
80 gallon (300 Lt) capacity,  
stainless steel construction,  
full jacket, safety valve,  
safety thermostat, motor  
assisted tilt, 2" tangent  
draw-off valve, 153540 BTU

### Short Form Specification

Item No. \_\_\_\_\_

Touchline Tilting Kettle, gas, 80 gallon (300 Lt) capacity,  
stainless steel construction, full jacket, safety valve, safety  
thermostat, motor assisted tilt, 2" tangent draw-off valve,  
153540 BTU

### Main Features

- Kettle is suitable to boil, steam, poach, braise or simmer all kinds of produce.
- Isolated upper well rim avoids risk of harm for the user.
- Ergonomic vessel dimensions, with a large diameter and shallow depth facilitates stirring and gentle food handling.
- Robust, circular burner with electronic ignition and monitoring.
- IPX6 water resistant.
- Edge of the large pouring lip can be equipped with a strainer (option).
- Motorized, variable pan tilting with "SOFT STOP". Tilting and pouring speeds can be precisely adjusted. Pan can be tilted over 90° to facilitate pouring and cleaning operations.
- Built in temperature sensor to precisely control the cooking process.
- USB connection to easily update the software, upload/download recipes and download HACCP data.
- [NOT TRANSLATED]

### Construction

- Cooking vessel in 1.4435 (AISI 316L) stainless steel featuring directional pouring lip. Double-jacket in 1.4404 (AISI 316L) stainless steel designed to operate at a pressure of 22 psi (1.5 bar).
- External panelling and internal frame made of 1.4301 (AISI 304) stainless steel.
- Double-lined insulated lid in 1.4301 (AISI 304) stainless steel mounted on the cross beam of the unit, counterbalanced by a hinge that remains open in all positions.
- 2" tangent draw-off valve.
- Safety valve avoids overpressure of the steam in the double jacket.
- Safety thermostat protects against low water level in the double jacket.
- Ergonomic and user friendly thanks to the high tilting position and the pouring lip design which allow to easily fill containers.
- Water mixing tap is available as optional accessory to make water filling and pan cleaning easier.
- Front-mounted inclined led "TOUCH" control panel with recessed deep drawn casing, features self-explanatory display functions which guide operator throughout the cooking process: simultaneous display of actual and set temperature as well as set cooking time and remaining cooking time; real time clock; "SOFT" control for gentle heating up for

APPROVAL: \_\_\_\_\_



**Electrolux**  
PROFESSIONAL

## High Productivity Cooking Touchline tilting kettle, gas (153540 BTU), 80 gal (300 lt) with 2" TDO valve

delicate food; 9 power simmering levels from gentle to heavy boiling; timer for deferred start; error display for quick trouble-shooting.

- Minimised presence of narrow gaps for easier cleaning of the sides to meet the highest hygiene standards.
- Possibility to store recipes in single or multiphase cooking process, with different temperature settings.
- Can be prearranged for energy optimisation or external surveillance systems (optional).
- 98% recyclable by weight; packaging material free of toxic substances.
- [NOT TRANSLATED]
- [NOT TRANSLATED]

### User Interface & Data Management

- Connectivity ready for real time access to connected appliances from remote and data monitoring (requires optional accessory - contact the Company for more details).

### Included Accessories

- 1 of Food Tap Strainer Rod PNC 910162
- 1 of Food Tap Strainer PNC 911966
- 1 of 2" tangent draw-off valve for braising pans. Factory mounted only, increased lead time PNC 913571

### Optional Accessories

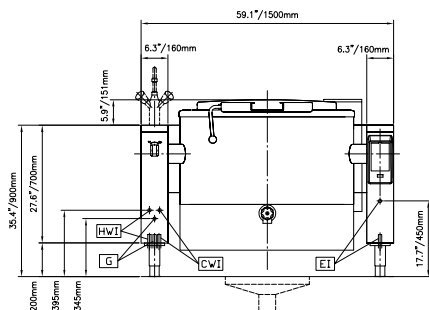
- Strainer for 80 gallon kettles PNC 910006 ☐
- Base plate, 80 gallon (300 liter) for kettles PNC 910036 ☐
- Food Tap Strainer Rod PNC 910162 ☐
- Left cover plate and mixing faucet for kettles (587041 and 587042) PNC 911821 ☐
- Food Tap Strainer PNC 911966 ☐
- Spray gun for tilting units, height 27-1/2" (698.5mm) - factory fitted PNC 912776 ☐
- 4 flanged feet, 2", for prothermetic units (kettles, braising pans & pressure braising pans) PNC 913438 ☐
- Measuring rod for tilting kettle 80 gallon PNC 913505 ☐
- - NOT TRANSLATED - PNC 913577 ☐
- Spray gun kit for free-standing ProThermetic Tilting units H=700 - US - Field Mounted PNC 913579 ☐



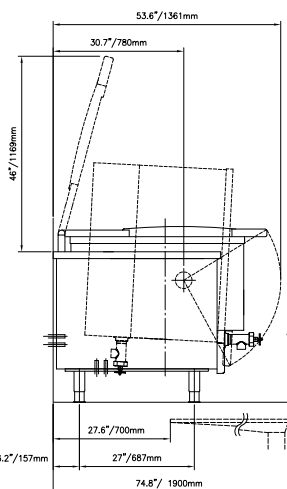
**Electrolux**  
PROFESSIONAL

## High Productivity Cooking Touchline tilting kettle, gas (153540 BTU), 80 gal (300 lt) with 2" TDO valve

Front



Side

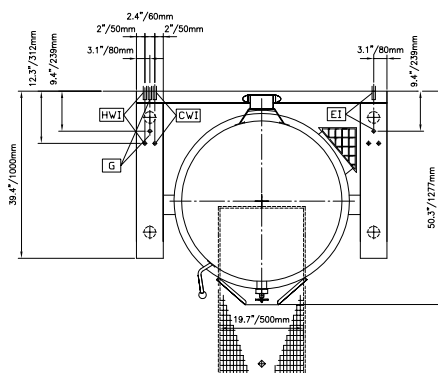


CWI = Cold Water inlet      HWI = Hot water inlet

EI = Electrical connection

G = Gas connection

Top



### Electric

Supply voltage: 120 V/1 ph/60 Hz

Total Watts: 0.25 kW

### Gas

Gas Power: 153540 Btu/hr (45 kW)

Gas Type Option: Propane

Gas Inlet: 3/4"

### Water:

Pressure: 29-87 psi (2-6 bar)

### Installation:

Type of installation: FS on concrete base; FS on feet; On base; Standing against wall

### Key Information:

Working Temperature MIN: 122 °F (50 °C)

Working Temperature MAX: 230 °F (110 °C)

External dimensions, Width: 59 1/16" (1500 mm)

External dimensions, Depth: 39 3/8" (1000 mm)

External dimensions, Height: 27 9/16" (700 mm)

Net weight: 860 lbs (390 kg)

Shipping width: 63 " (1600 mm)

Shipping depth: 57 1/16" (1450 mm)

Shipping weight: 1168 lbs (530 kg)

Shipping volume: 114.69 ft<sup>3</sup> (3.25 m<sup>3</sup>)

Configuration: Round; Tilting

Heating type: Indirect

Tilting mechanism: Automatic



High Productivity Cooking  
Touchline tilting kettle, gas (153540 BTU), 80 gal (300 lt) with 2" TDO valve

The company reserves the right to make modifications to the products without prior notice. All information correct at time of printing.

2026.01.08